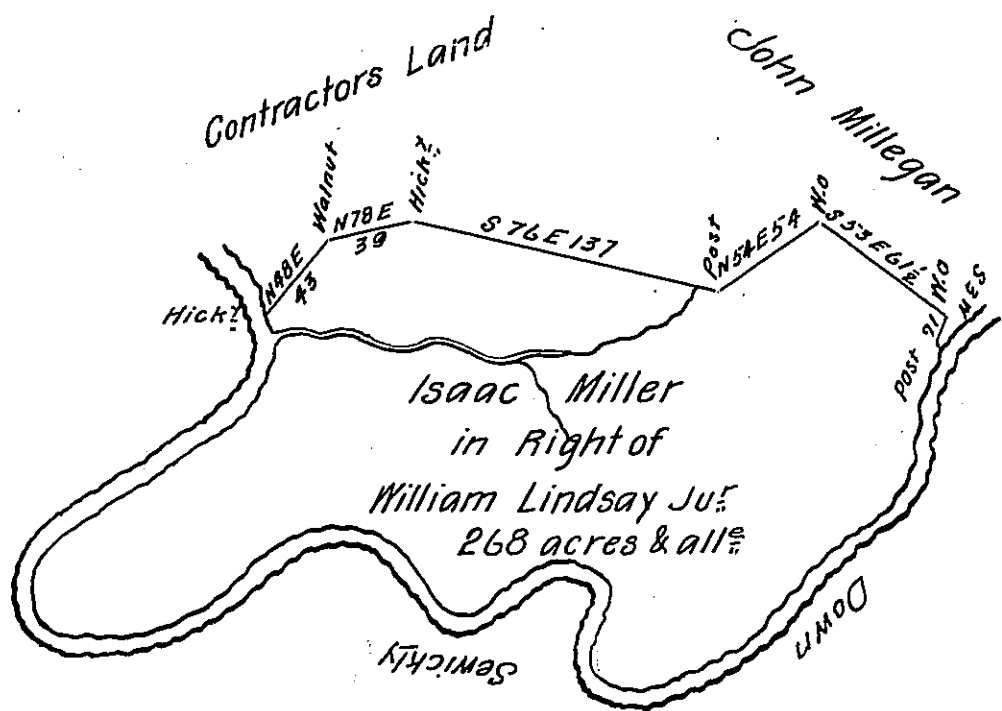


(Survey 59)



Courses and Dist<sup>cs</sup> down

Sewickly	S 15 W	22
	S 27 W	26 1/2
	S 19 W	25 1/2
	S 62 W	21
	S 45 W	46 1/2
	S 65 W	66
	S 87 W	17 1/2
	N 8 W	10
	N 7 E	32
	N 62 W	18
	S 65 W	46
	N 71 W	13
	N 46 1/2 W	42 1/2
	N 72 W	21
	S 81 W	14
	S 68 W	10
	S 54 1/2 W	57 1/2
	S 85 W	31
	N 65 W	30
	N 12 W	12
	N 7 E	12
	N 57 E	32
	N 59 E	73
	N 43 E	14
	N 25 E	24
	N 22 W	6
	to H <sup>l</sup> & place of Beg <sup>s</sup>	

Application

In Pursuance of a Warrant bearing date 3<sup>rd</sup> day of April 1769

No 738 Surveyed on the 10<sup>th</sup> day of April 1787 unto Isaac Miller in Right of William Lindsay Junior the aboves<sup>d</sup> described tract of land Situate on Sewickly Creek in Huntington Township in the County of Westmoreland Contain- ing two hundred and sixty eight acres and allow<sup>ce</sup> of six P<sup>ct</sup> Cent for Roads &c.

Benj Lodge D. S.

To John Lukens Esq<sup>r</sup>  
Surveyor General

IN TESTIMONY that the above is a copy of the original remaining on file in the Department of Internal Affairs of Pennsylvania, made conformably to an Act of Assembly approved the 16th day of February, 1833, I have hereunto set my Hand and caused the Seal of said Department to be affixed at Harrisburg, this eighth day of December 1905.

*Loach D. Brown*  
Secretary of Internal Affairs.